

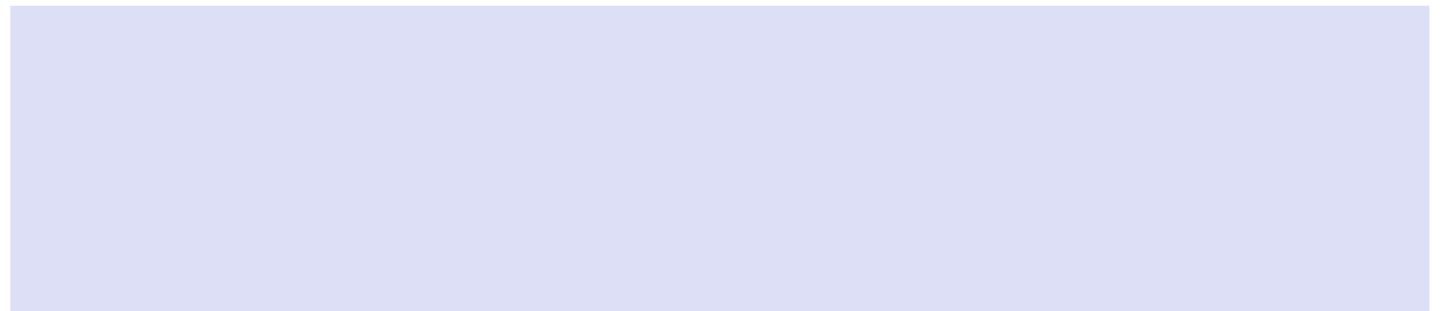


npcindex www.npcindex.com 021-44 47 74 67

QEEG Clinical Report

BrainLens V0.4

Report Description



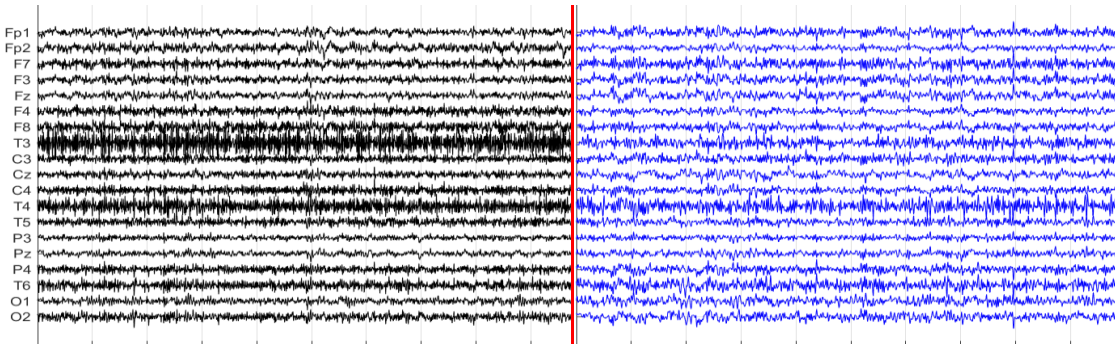
Personal & Clinical Data

Name	Test	Date of Recording	Test
Date of Birth - Age	Test	Gender	Test
Handedness(R/L)	Test	Source of Referral	Test
Initial Diagnosis	Test		
Current Medication	Test		
EEG Slowing	Test	Test	
Interictal Epileptiform Discharge	Test		

Denoising Information (EC)

Raw EEG

Denoised EEG



Flat Channels

Rejected Channels

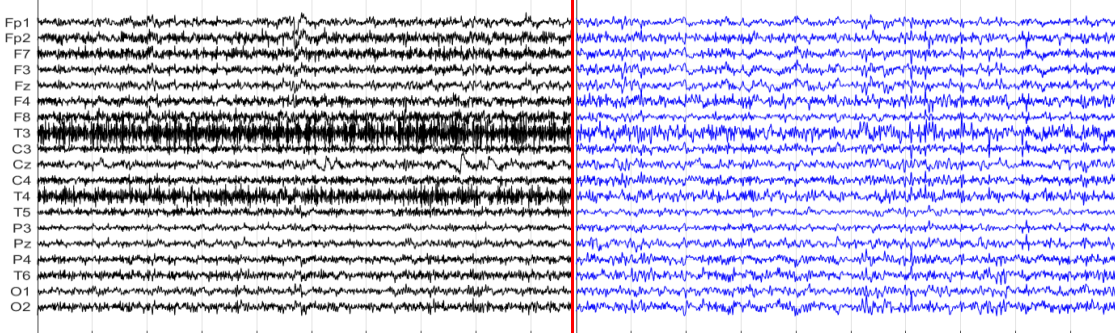


Number of Eye and Muscle Elements				Low Artifact Percentage	
Eye	1	Muscle	6		
Total Artifact Percentage				High Artifact Percentage	
EEG Quality			good	Total Recording Time Remaining	147.05 sec

Denoising Information (EO)

Raw EEG

Denoised EEG



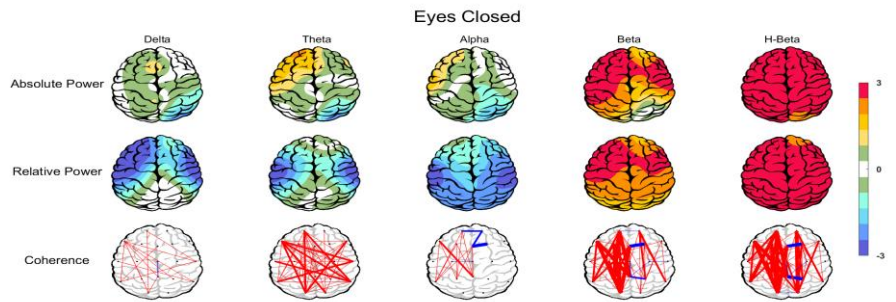
Flat Channels

Rejected Channels

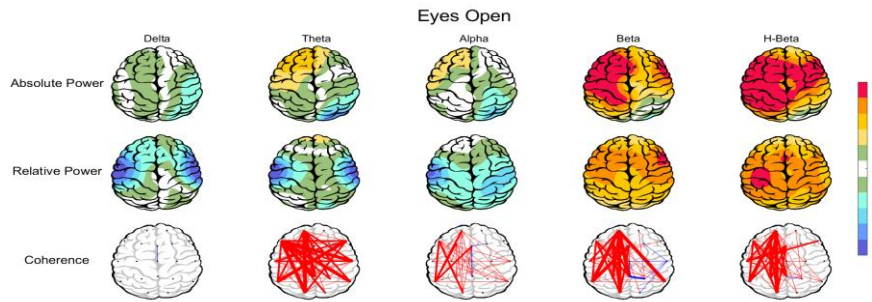


Number of Eye and Muscle Elements				Low Artifact Percentage	
Eye	1	Muscle	7		
Total Artifact Percentage				High Artifact Percentage	
EEG Quality			good	Total Recording Time Remaining	139.80 sec

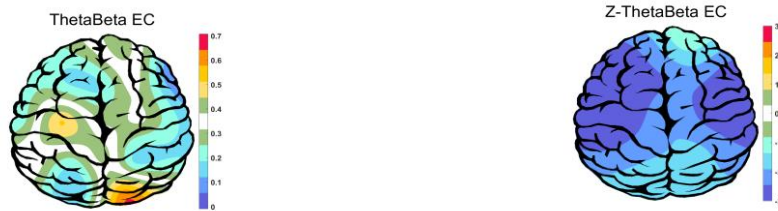
Z Score Summary Information (EC) 



Z Score Summary Information (EO) 



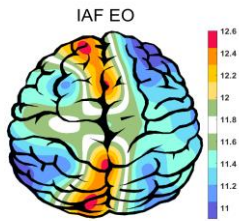
E.C.T/B Ratio (Raw- Z Score)



E.O.T/B Ratio (Raw- Z Score)

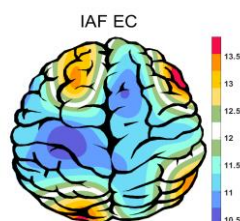


IAF(EO)



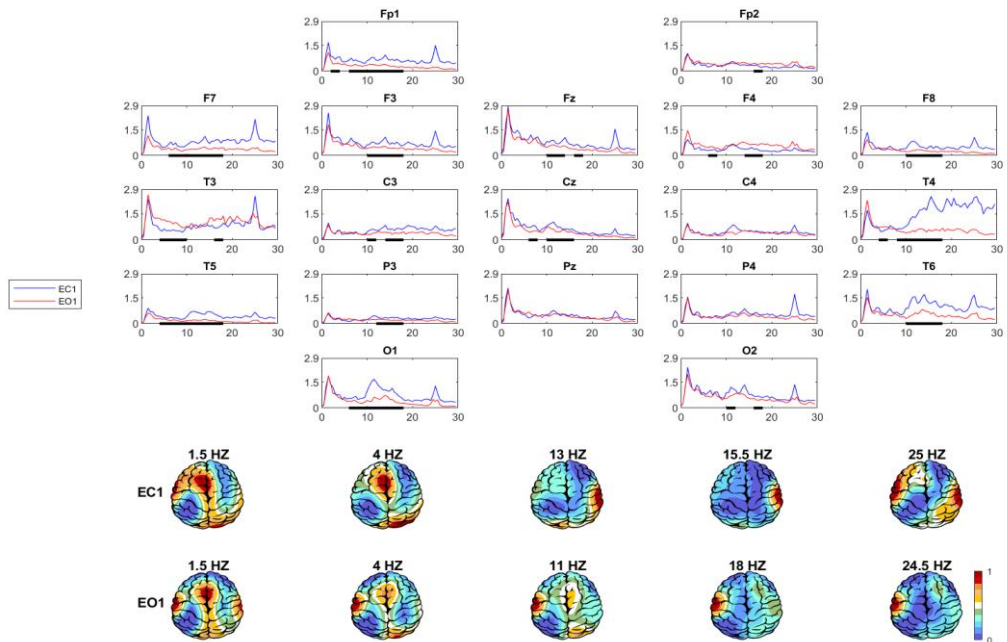
Eye Open IAF= 12.00

IAF(EC)

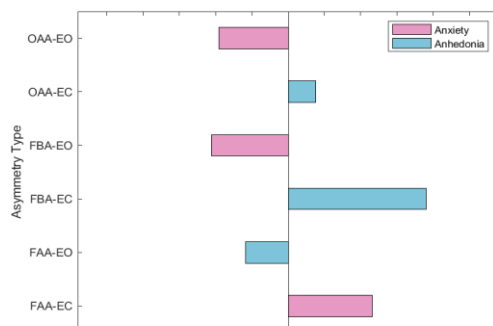


Eye Close IAF= 11.12

EEG Spectra



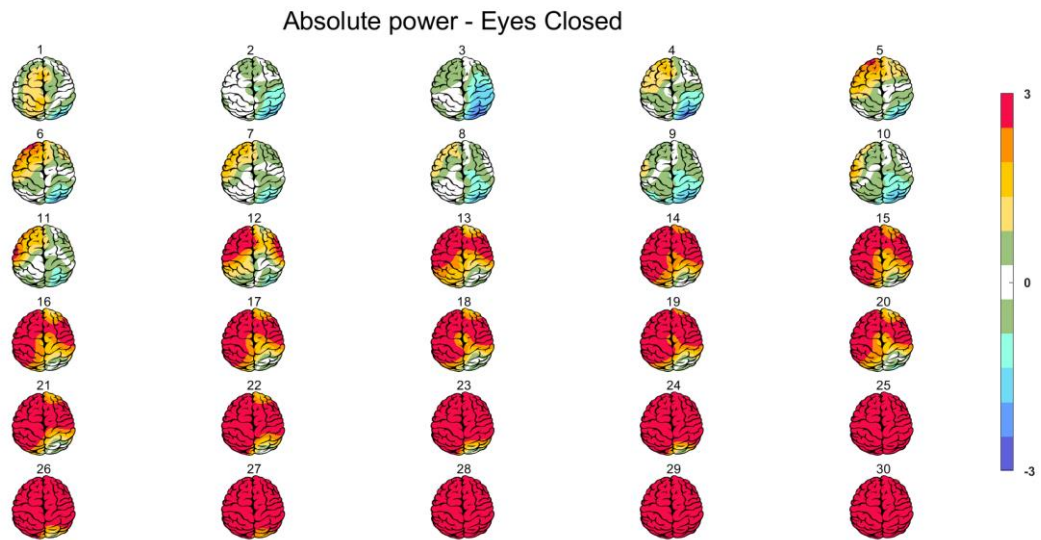
Alpha Asymmetry(AA)



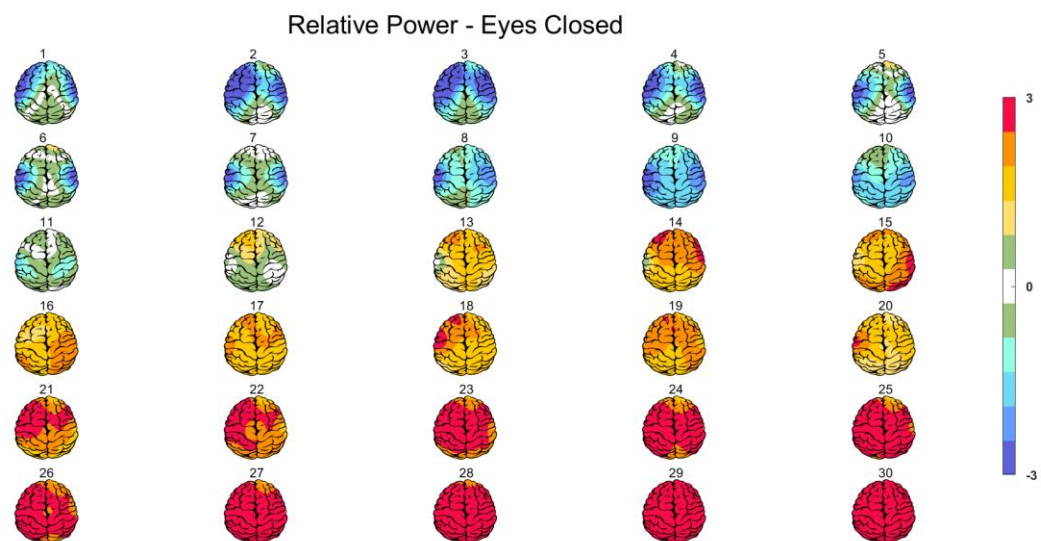
Alpha Blocking



Absolute Power-Eye Closed (EC)

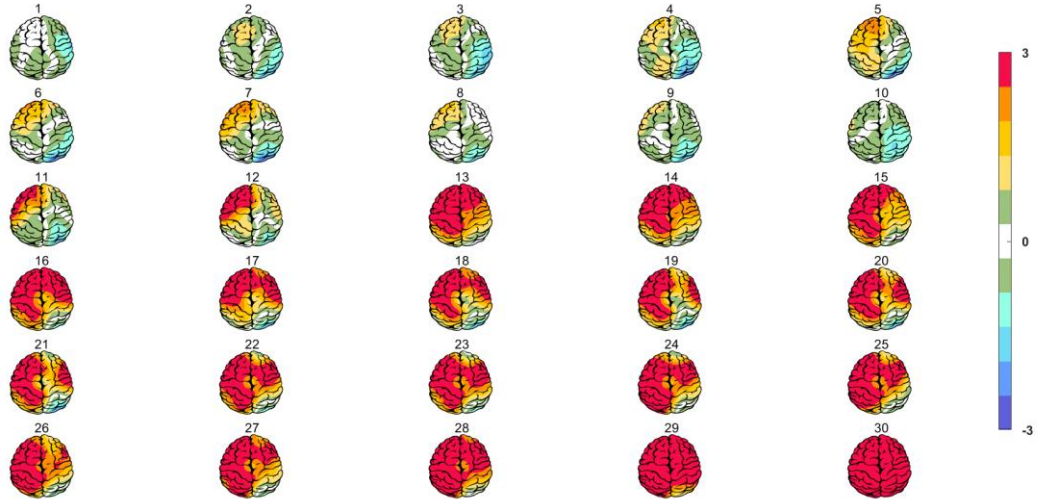


Relative Power-Eye Closed (EC)



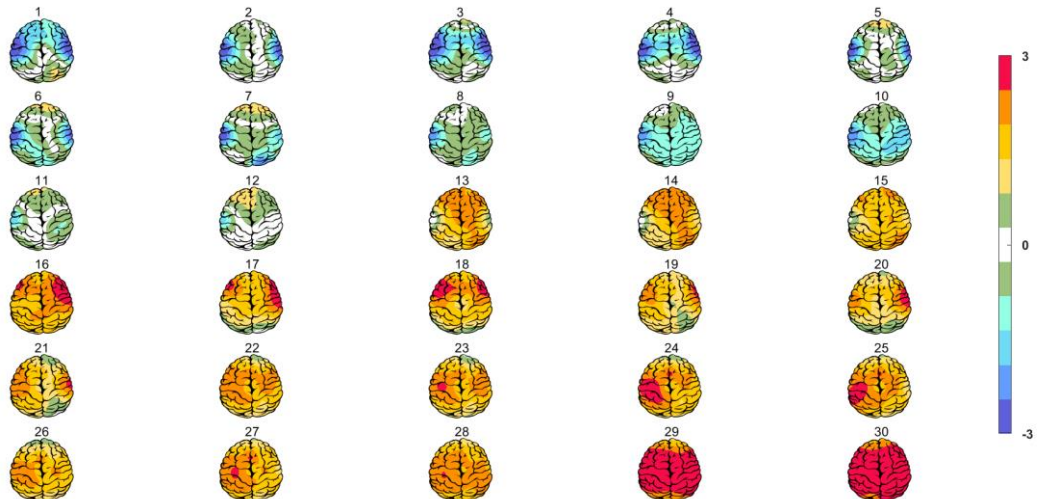
Absolute Power-Eye Open (EO) 

Absolute power - Eyes Open

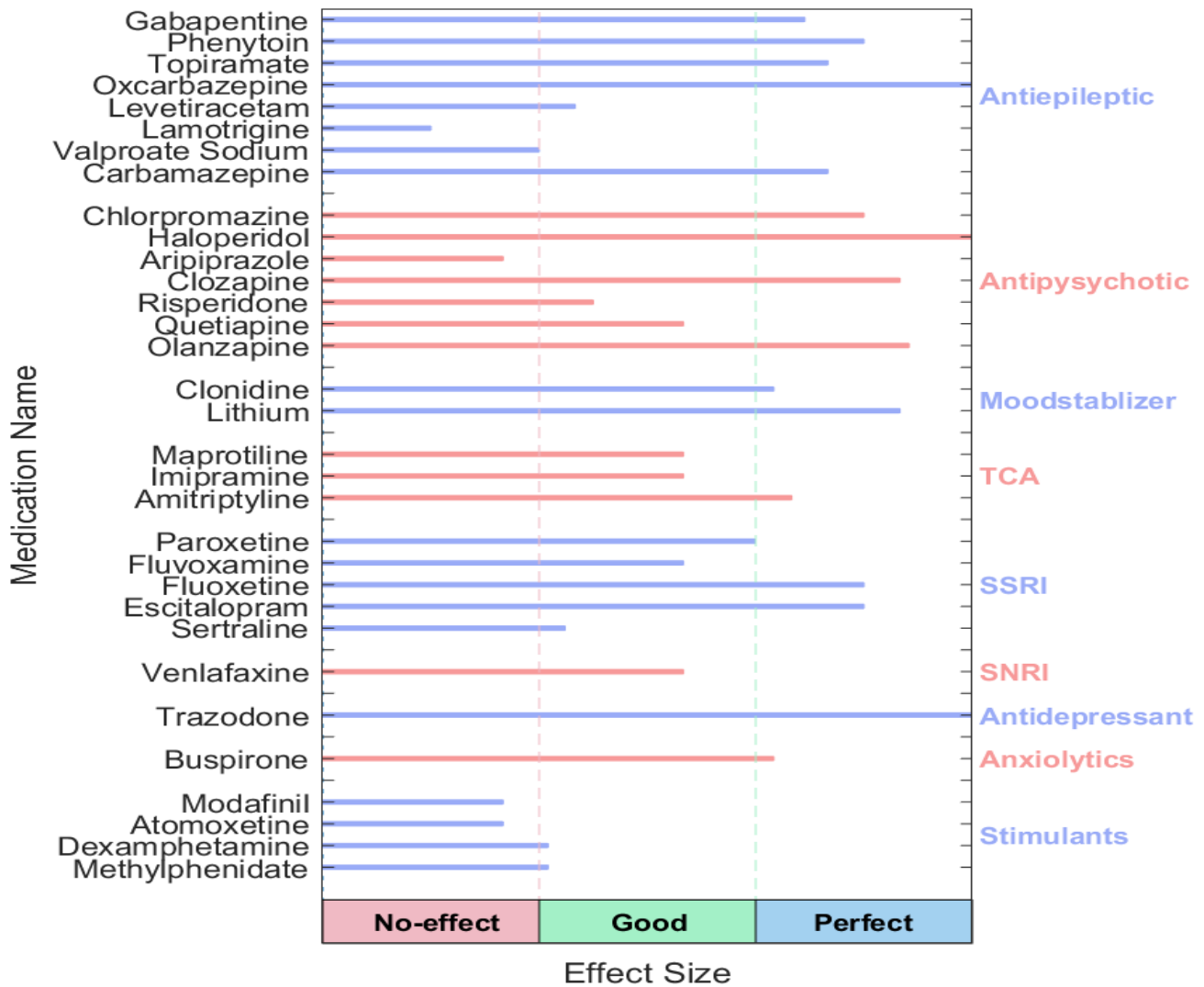


Relative Power-Eye Open (EO) 

Relative Power - Eyes Open



QEEG based predicting medication response



Explanation

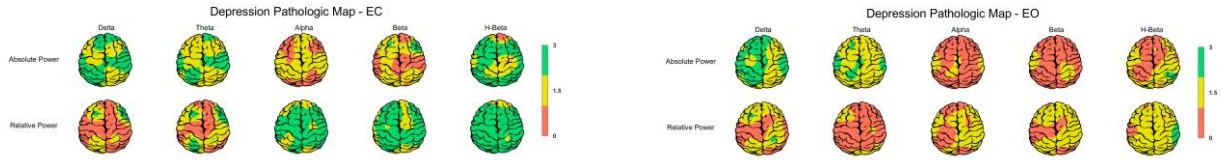
These two tables can be considered the most important finding that can be extracted from QEEG. To prepare this list, the NPCIndex Article Review Team has studied, categorized, and extracted algorithms from many authoritative published articles on predict medication response and Pharmacology EEG studies. These articles are published between 1970 and 2021. The findings extracted from this set include 85 different factors in the raw band domains, spectrum, power, coherence, and loreta that have not been segregated to avoid complexity, and their results are shown in these diagrams. One can review details in NPCIndex.com .

⚠ Medication Recommendation

These two charts, calculate response probability to various medications, according only to QEEG indicators. Blue charts favor drug response and red charts favor drug resistance. The longer the bar, the more evidence there is in the articles. Only drugs listed in the articles are listed. These tables present the indicators reviewed in the QEEG studies and are not a substitute for physician selection.

Pathological assessment for Depression

Compare to Depression Database

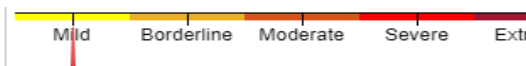


Depression Probability

Depression Table	EC		EO	
Feature Name	Threshold	Region	Threshold	Region
Increased Global rAlpha	0.00	NAN	0.00	NAN
Increased global rTheta	0.00	NAN	0.00	NAN
Decreased rDelta	-1.00	LF-RF-MF-LT-RT-C-	-0.50	LF-RF-MF-LT-RT-C-
Increased rBeta	2.00	LF-RF-MF-LT-RT-C-P-	2.00	LF-RF-MF-LT-RT-C-P-
Left FAA	0.00	NAN	0.00	NAN
Right OAA	0.38	Left OAA	0.38	Left OAA
Decreased Coherence	0.00	NAN	0.00	NAN
Increased Coherence	1.00	Decreased Coherence	1.00	Decreased Coherence

Depression Probability

Depression Severity

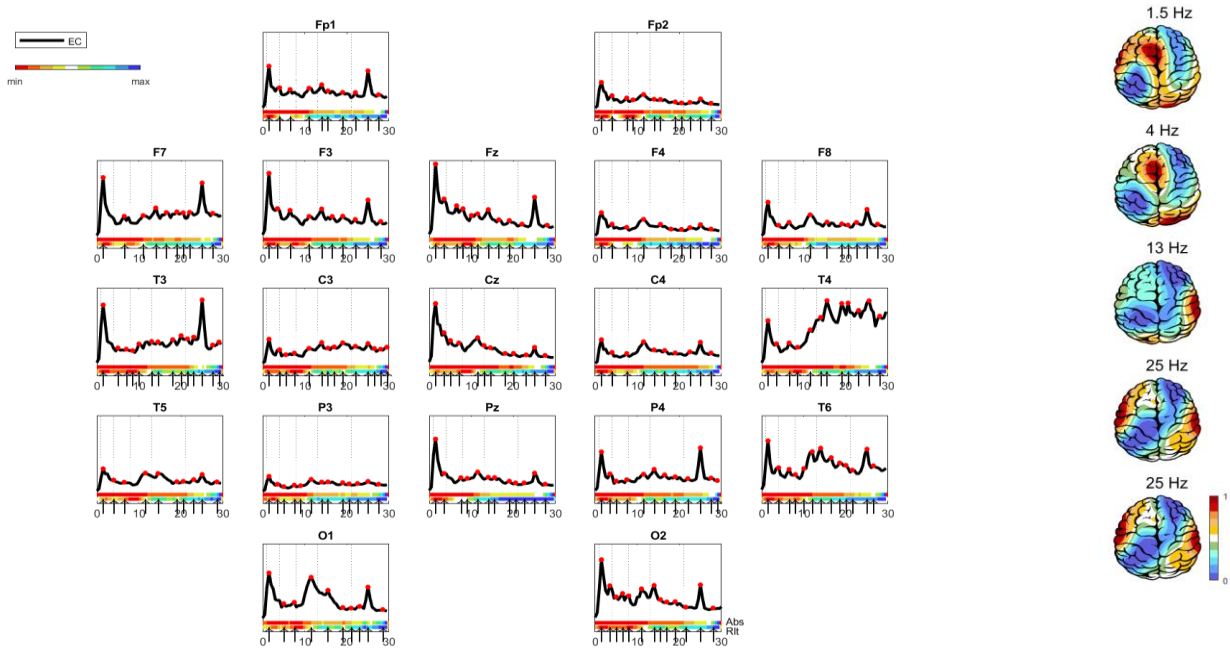


Anxiety Severity

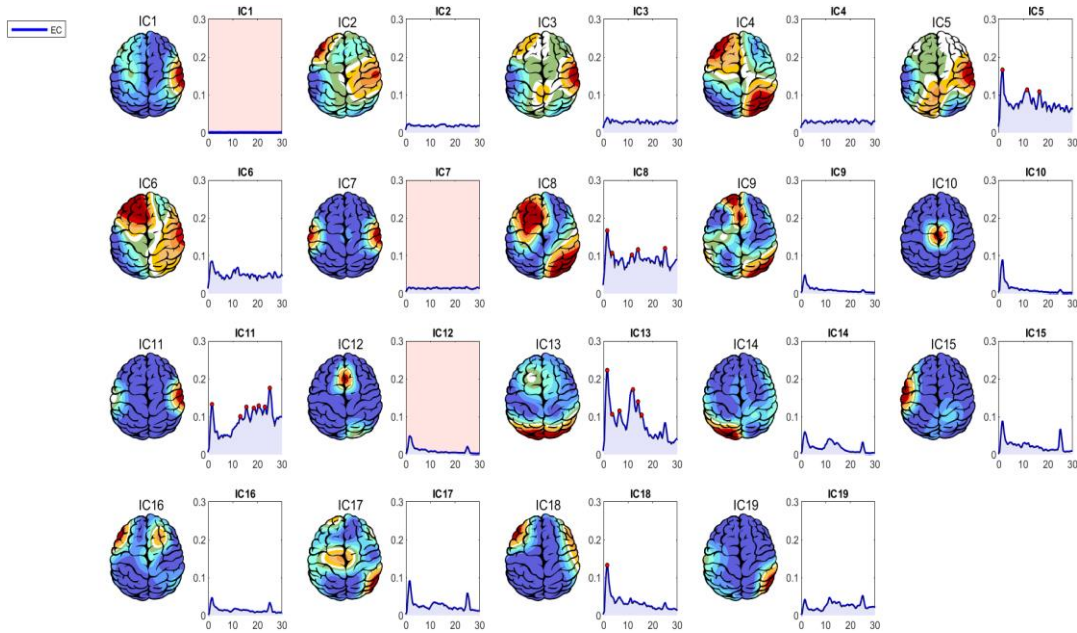


Protocol Generation

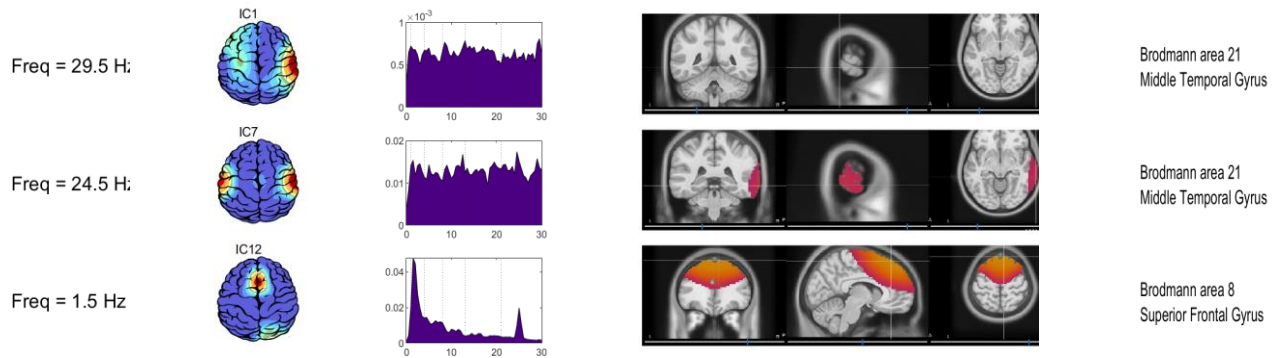
PSD-EC



Independent components-EC

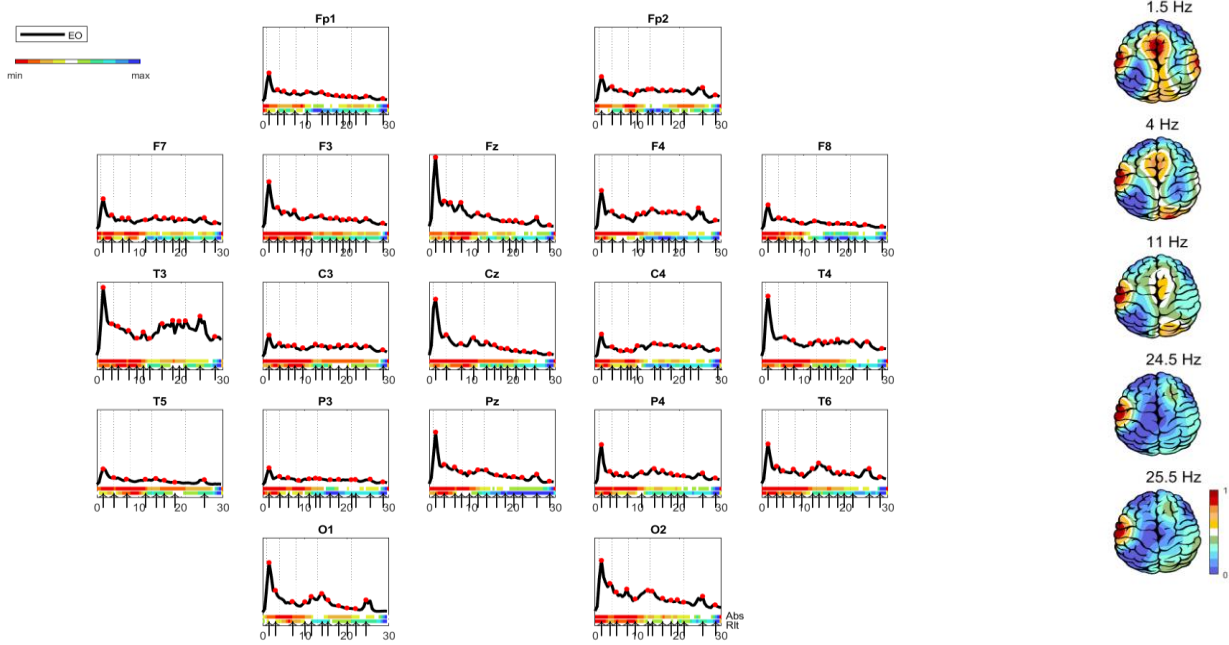


Source Localization of Important Components – EC

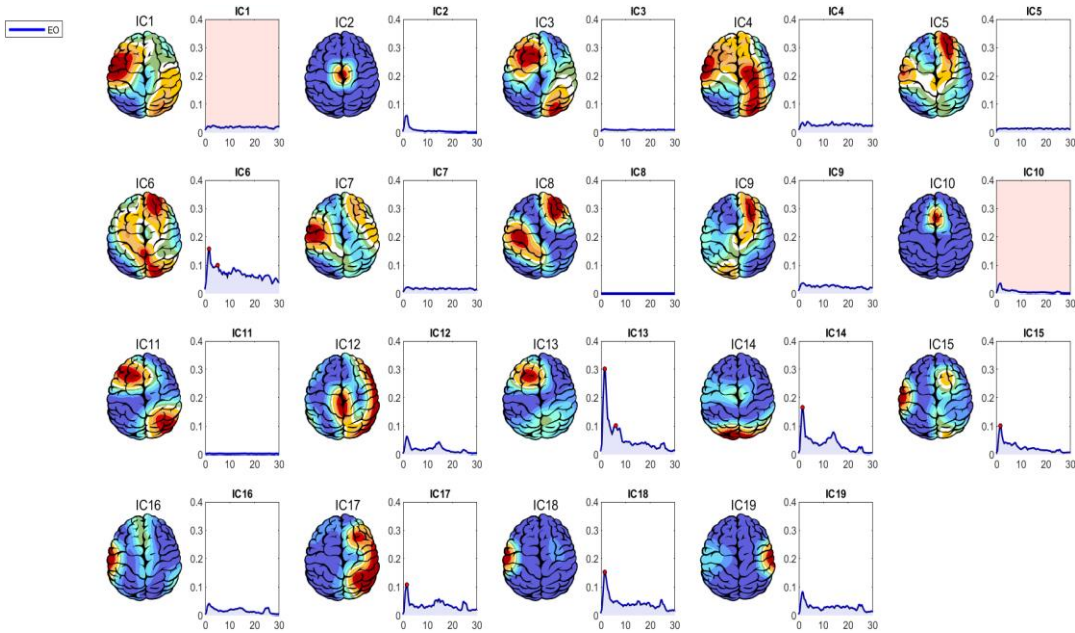


Protocol Generation

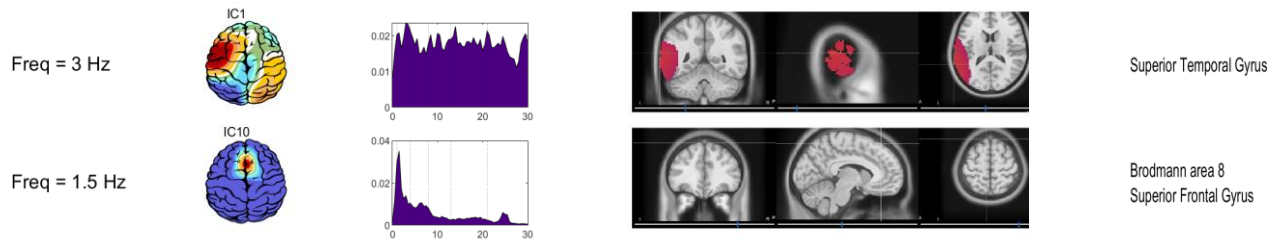
PSD-EO



Independent components-EO



Source Localization of Important Components – EO



 Report

گزارش:

-2 -.....

نتایج تشخیصی:

-2 -.....

پیشنهاد دارویی

(همواره ملاک انتخاب دارو تصمیم بالینی پزشک است. پیشنهادات زیر صرفاً با در نظر گرفتن یافته های QEEG نوشته شده است):

-2